

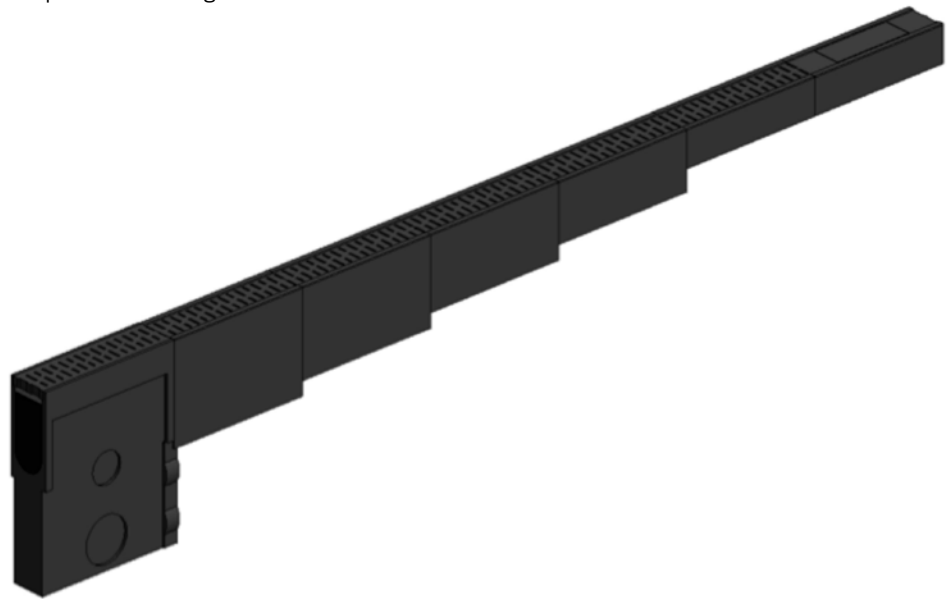
# ACO MultiDrain Monoblock PD100D

## Monocast channel drainage system

### User Guide for Autodesk Revit files

#### The ACO MultiDrain Monoblock PD100D Range

ACO MultiDrain Monoblock PD100D is incorporated in a single Revit family.

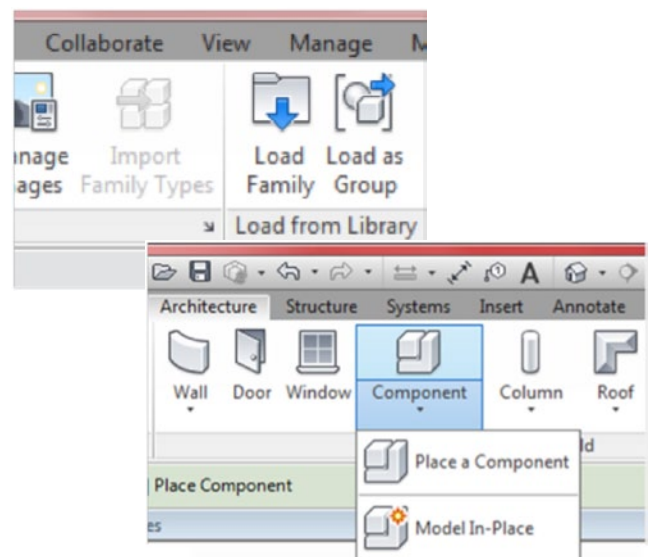


#### Loading ACO MultiDrain Monoblock PD100D into your project

Each system is modelled as a generic family that can simply be loaded into your project.

1. Download the ACO MultiDrain Monoblock PD100D file and save it to a suitable location
2. Open your project and navigate to an appropriate view
3. Navigate to the "Insert" icon on the Revit ribbon and click "Load Family"
4. Select the MultiDrain Monoblock PD100D Revit file you saved earlier
5. The file can now be placed into your project. Navigate to the "Architecture/Component" icons on the Revit ribbon and click "Place a Component"

Note that all of the MultiDrain Monoblock PD100D files are "floor" based items.





## Using the channel system and options

### ACO MultiDrain Monoblock PD100D channel system and options

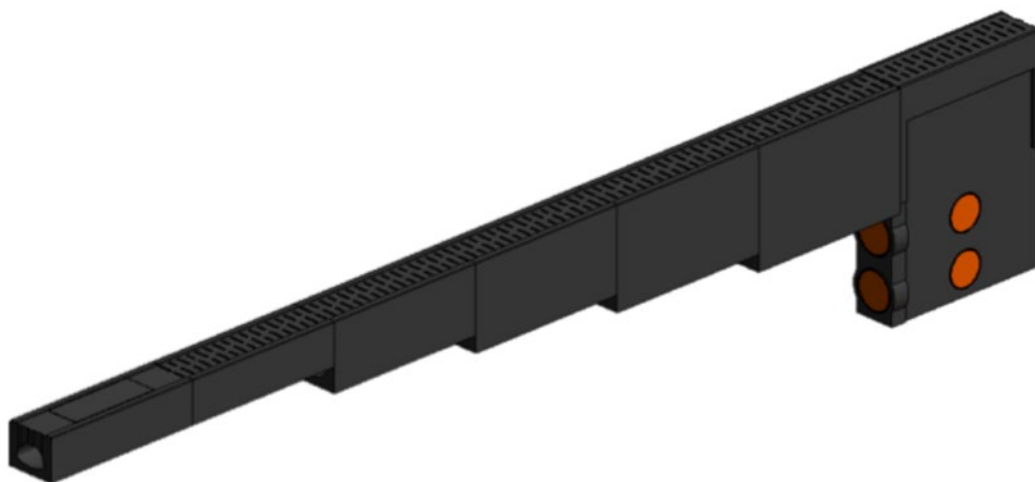
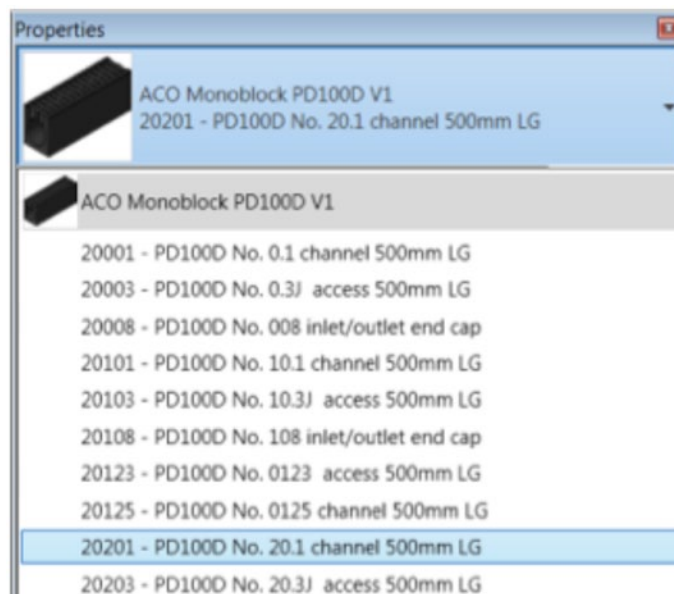
#### Step 1: Select the channel

All of the different options of the MultiDrain Monoblock PD100D channel systems are available within the Revit family.

Examples of the options included:

- Channel unit
- Access unit
- Sump unit
- Closing end cap
- Inlet / outlet end cap

Select your option from the “Properties” drop down menu.

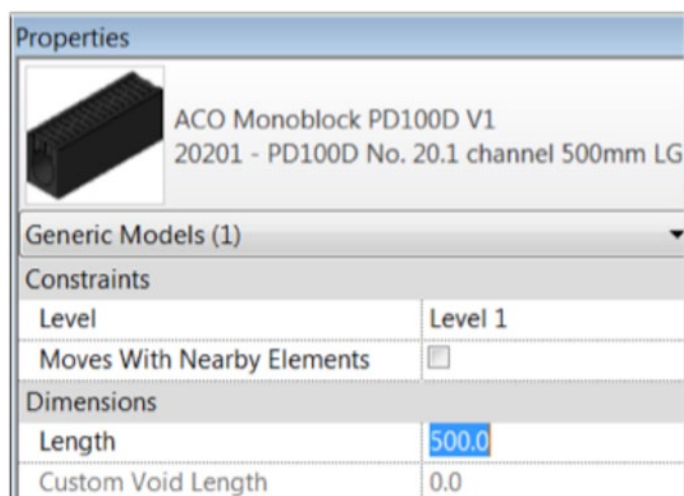


#### Step 2: Non-standard channel lengths

Additional features have been built into the Monoblock files that allow non-standard channel lengths to be incorporated in the project.

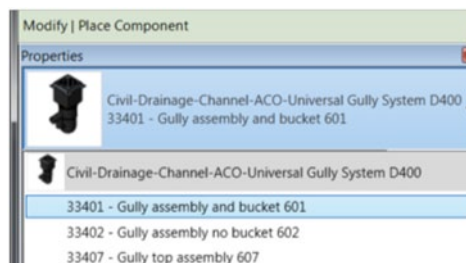
To choose a non-standard channel length, position the channel within the project and select it, the “Properties” box will appear on the left hand side of the screen for the component.

Options for shorter, non-standard channel lengths can be made here.



#### ACO Universal Gully

For further outlet options to the ACO MultiDrain Monoblock PD100D channel system, incorporate the “ACO Universal Gully” into the project. Simply download and load into the project.



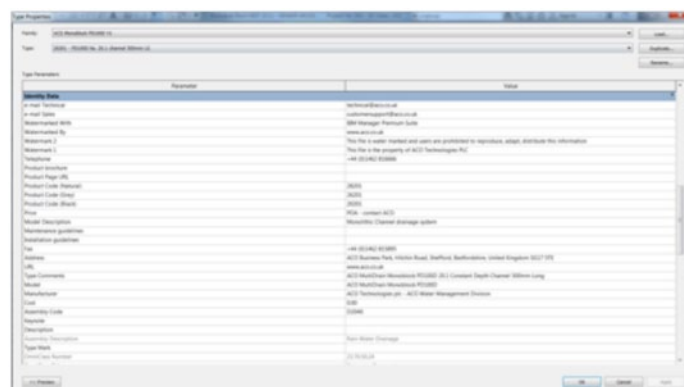
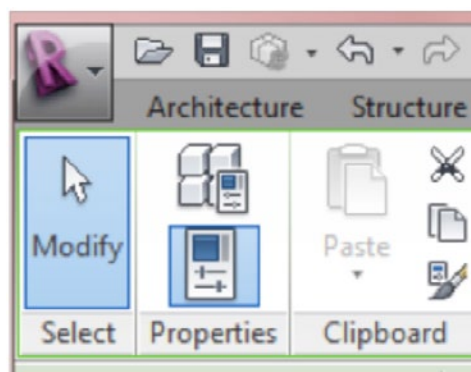


## ▶ Type properties

The ACO MultiDrain Monoblock PD100D file has a wealth of useful information embedded within it, including installation and maintenance details.

This information, along with much more is either stored within the files or available through hyperlinks within the components type properties.

1. To access the information within the component, simply select the component and then click the “Type Properties” icon on the Revit ribbon at the top of the screen
2. The “Type Properties” information sheet will now be displayed on the screen. Simply scroll up and down the sheet to find the information you require.
3. The information within the “Type Properties” is stored as “Shared Parameters” so can easily be used when creating a schedule for example.



▶ **Material library**

The ACO MultiDrain Monoblock PD100D files contain materials that are already pre-loaded into the components. When loading the ACO MultiDrain Monoblock PD100D files into your project the pre-loaded materials will automatically transfer through.

▶ **Other notes**

You can add the ACO MultiDrain Monoblock PD100D systems to your company template file. They will then be available without the need to load them when starting a new project. The ACO MultiDrain Monoblock PD100D systems have been created in Revit 2013.